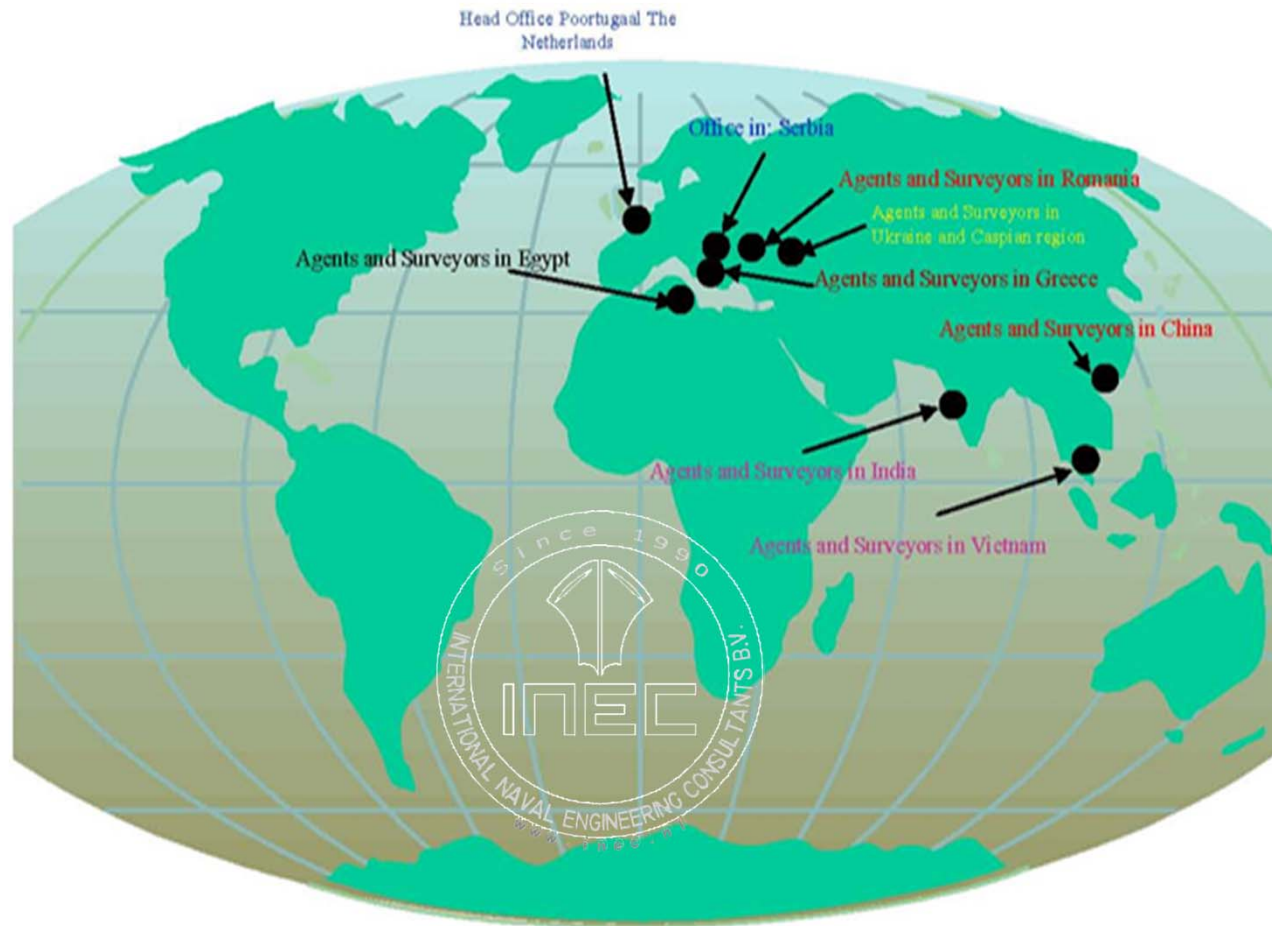


# Friendship Sayang Group

Passenger Vessels, Yachts, Special Ships



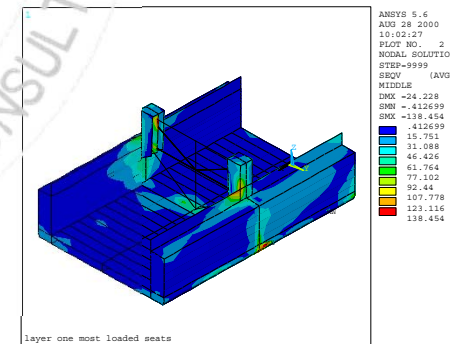
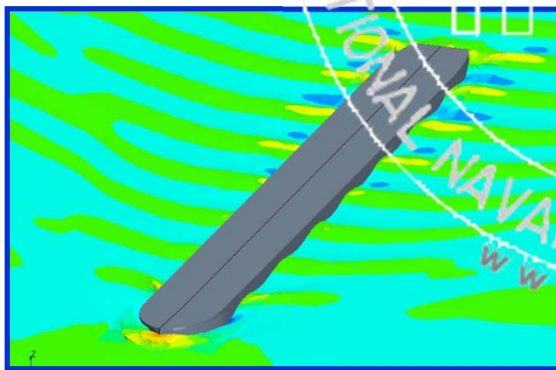
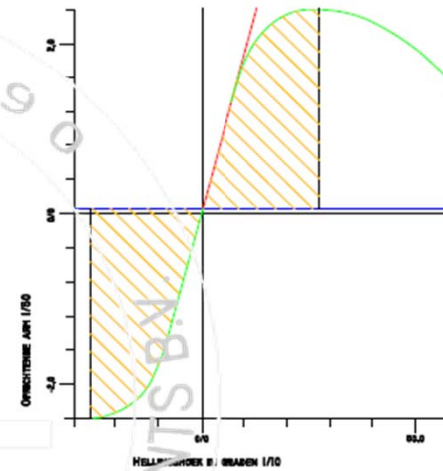
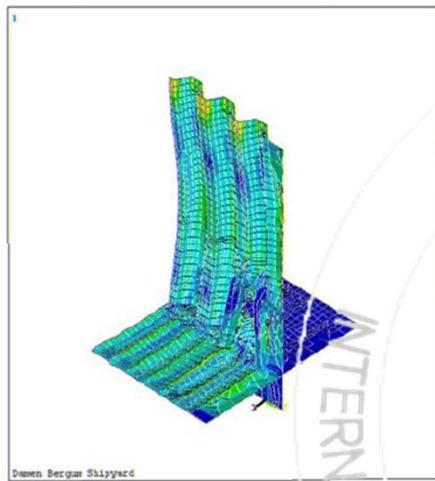
# Company profile

- Independent service to partners in all segments of ships design and ship building.
- **INEC B.V.** and **Friendship Marlin B.V.** operating under Friendship Sayang Group
- **Designing** of all types of sea-going and inland ships
- Giving **assistance** to clients during all stages of shipbuilding
- **Operating** world wide
- More than **75%** of designed ships are built or supervised by us
- Realised more than **1500** different projects



# Full Scope of Engineering

- Full design including all types of **hydrostatic** and **hydrodynamic** calculations
- Longitudinal and local strength **calculations**
- **FEM and CFD** analyses



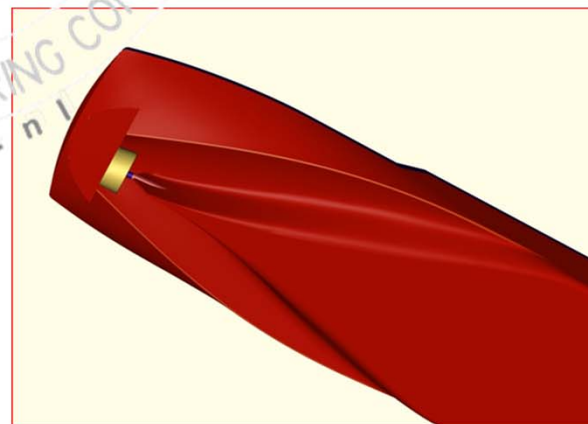
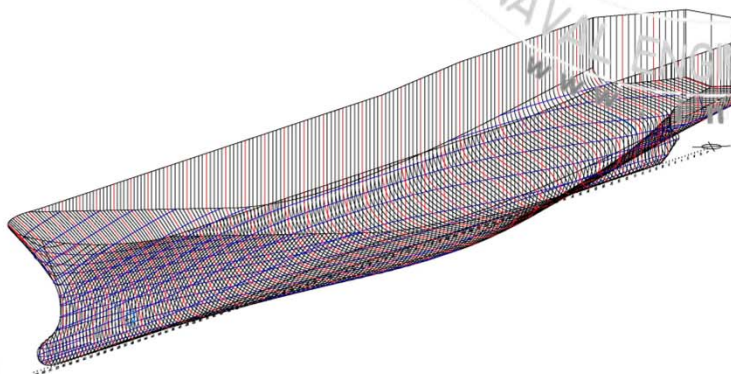
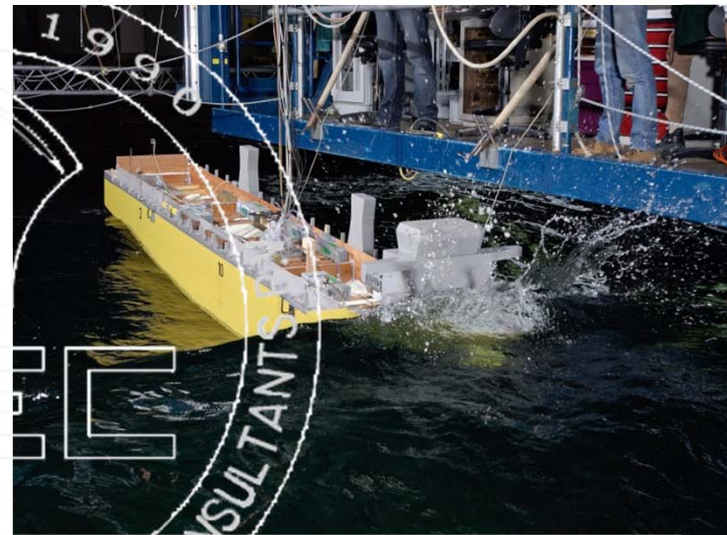
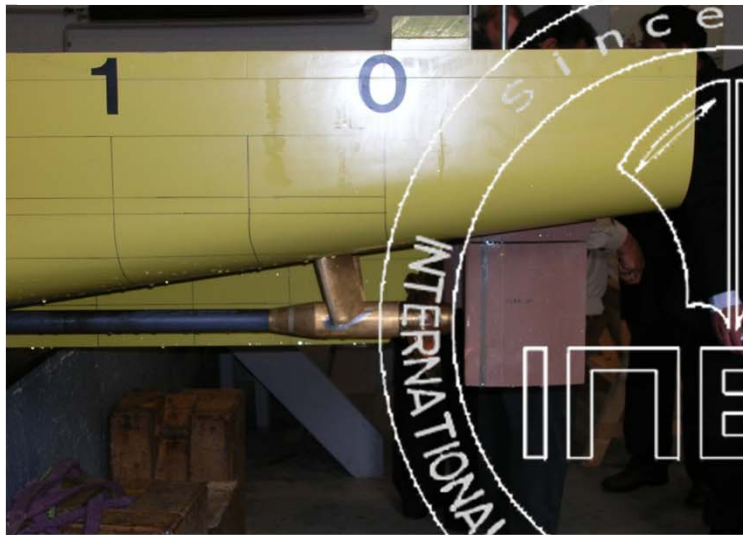


# Propulsion, form's & Model tests

Close cooperation with model test facilities in Europe and India.

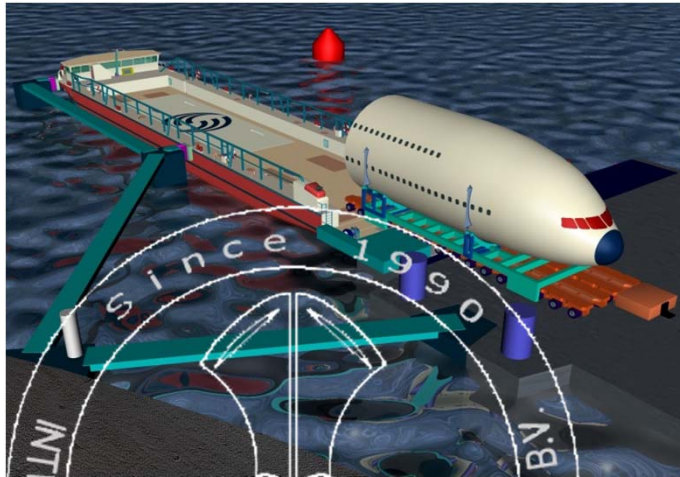
Development of forms for optimal speed / consumption ratio.

Experience with Severe Sailing Conditions.

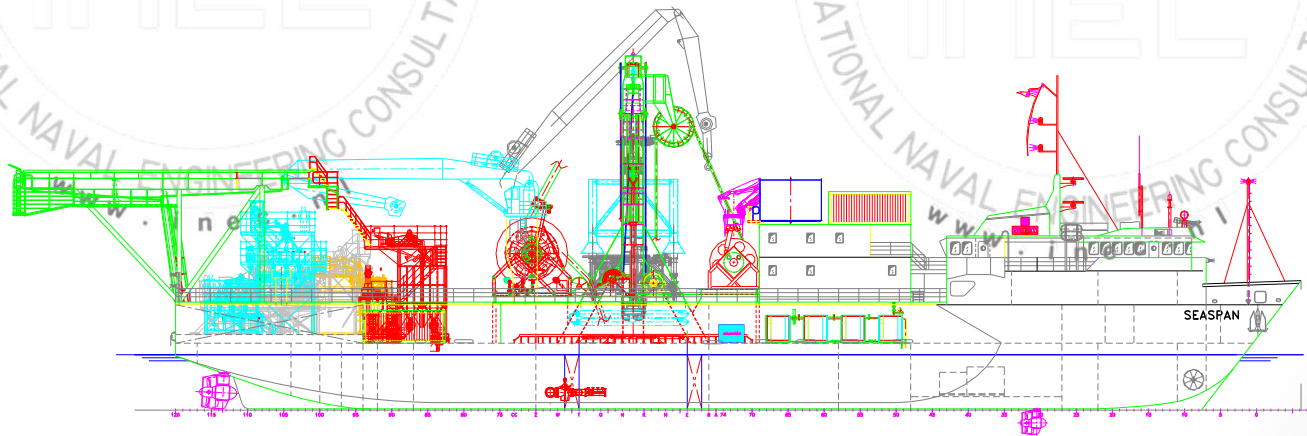


# Specialists in Conceptual and Special Designs

## Examples of Some Exceptional Designs



**Diamond exploration and Diamond Dredging Vessel**





# Specialists in Conceptual and Special Designs

## Examples of Some Exceptional Designs

Fast Open Top Dock Carriers



Special tanker – Australian Navy



Fast RoRo-Passenger Ferries



# Designs as 1<sup>st</sup> Time in The World

Worlds 1<sup>st</sup> LNG Bunker Vessel  
Propelled fully on LNG



Worlds 1<sup>st</sup> Dual Fuel propelled  
Bunkering Vessel

First Dual Fuel Propelled Tanker  
Approval: Lloyd Register





# Designs of LNG and Combined Bunker Tankers

**COMBINATION BUNKER TANKERS  
(LNG / MDO/ HFO)**



**LNG BUNKER TANKERS  
(LNG / MDO/ HFO)**



**Combination Bunkering in process**



**SHALLOW DRAFT LNG BUNKER TANKERS**

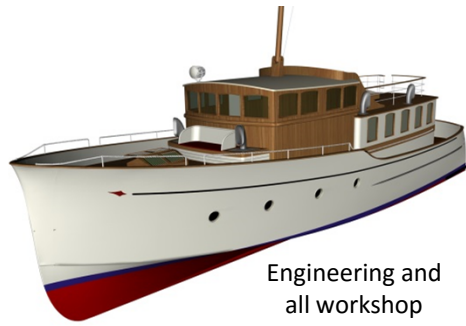




# SPECIAL Designs-LNG Bunker Tankers

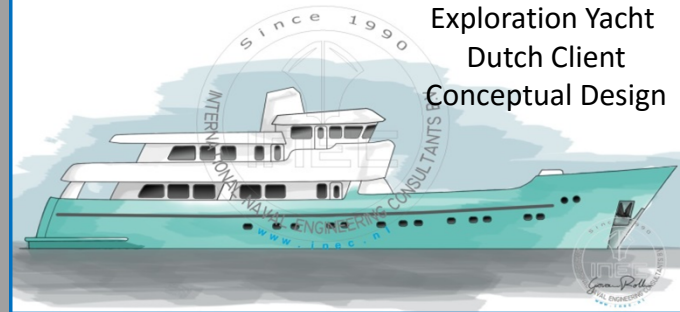
## Shallow Draft Coastal LNG Bunker Tanker



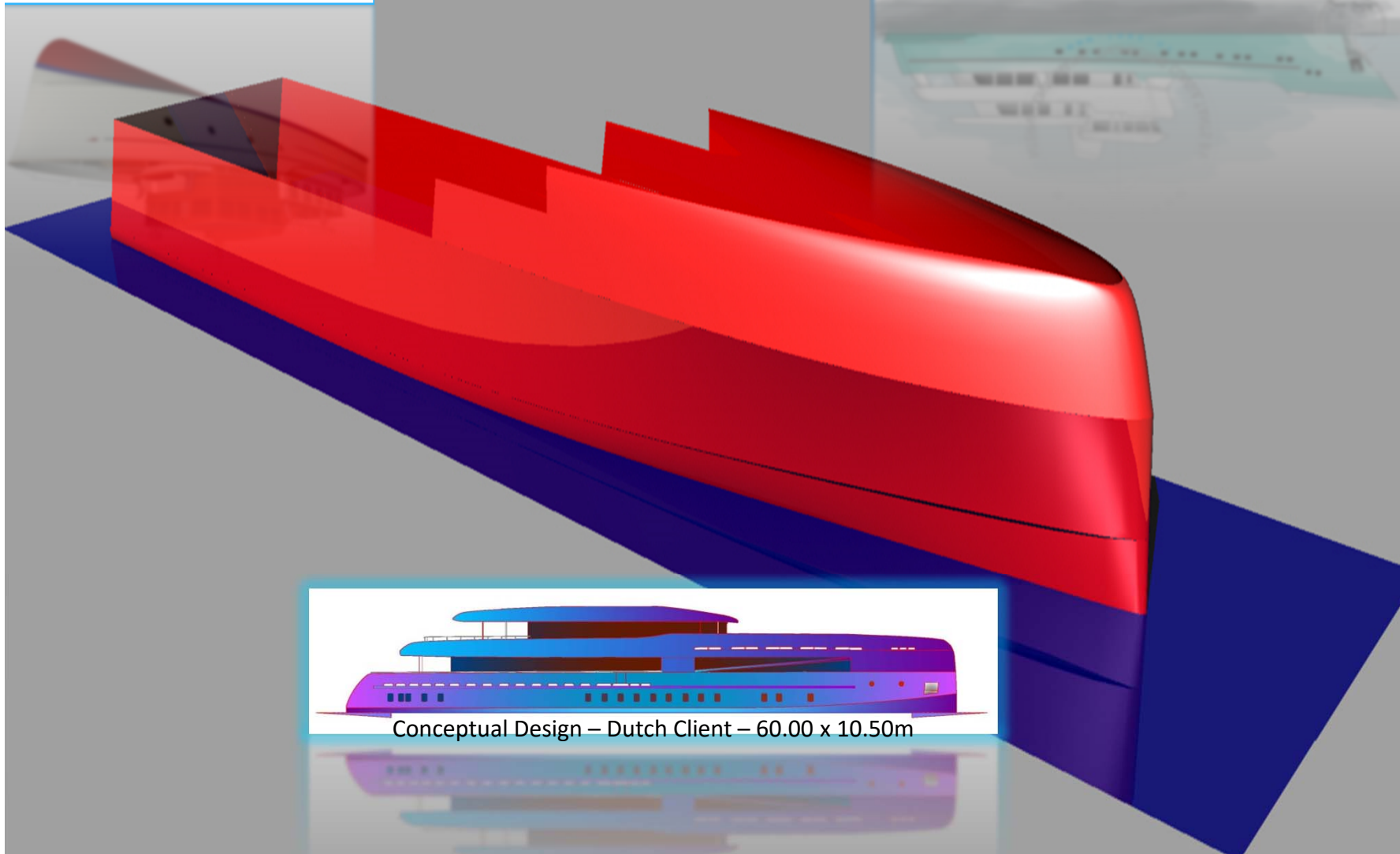


Engineering and  
all workshop  
drawings

## PASSENGER VESSELS and YACHTS



Exploration Yacht  
Dutch Client  
Conceptual Design



Conceptual Design – Dutch Client – 60.00 x 10.50m



# FAST CREW FERRY FOR NORTH SEA

Dutch Client  
Conceptual Design





# RECONSTRUCTION of EXISTING PASSENGER VESSEL

## Full Scope Conceptual Design

Belgian Investment Group  
Conceptual and Detail Design





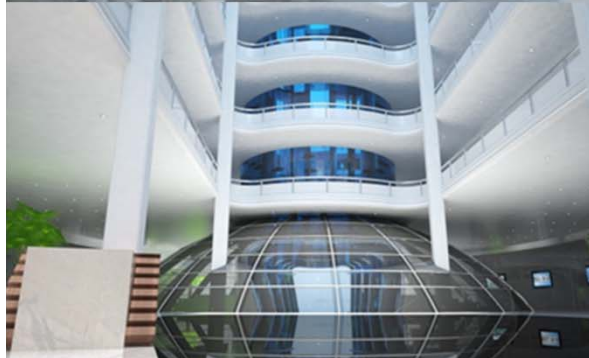
# RESIDENTIAL PASSENGER VESSEL Full Scope Conceptual Design

Belgian Investment Group  
Conceptual and Detail Design





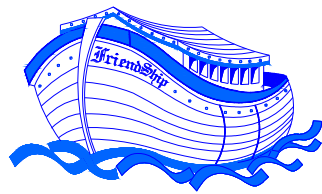
# INTERIOR DESIGN PASSENGER VESSEL







FOR ALL YOUR SHIP DESIGN AND BUILDING PROJECT  
FOR ALL CONSULTING AND EXPERTISE  
FOR TURN KEY DELIVERY OF SHIPS  
FOR ONSITE ASSISTANCE AND PROJECT MANAGEMENT



# **FriendShip-Sayang Group**

Albrandswaardseweg 7, 3171 AD Poortugaal, The Netherlands

Tel: +31-(0)10-5012215, Fax: +31-(10)-5012501

e-mail: [nesha@planet.nl](mailto:nesha@planet.nl)