

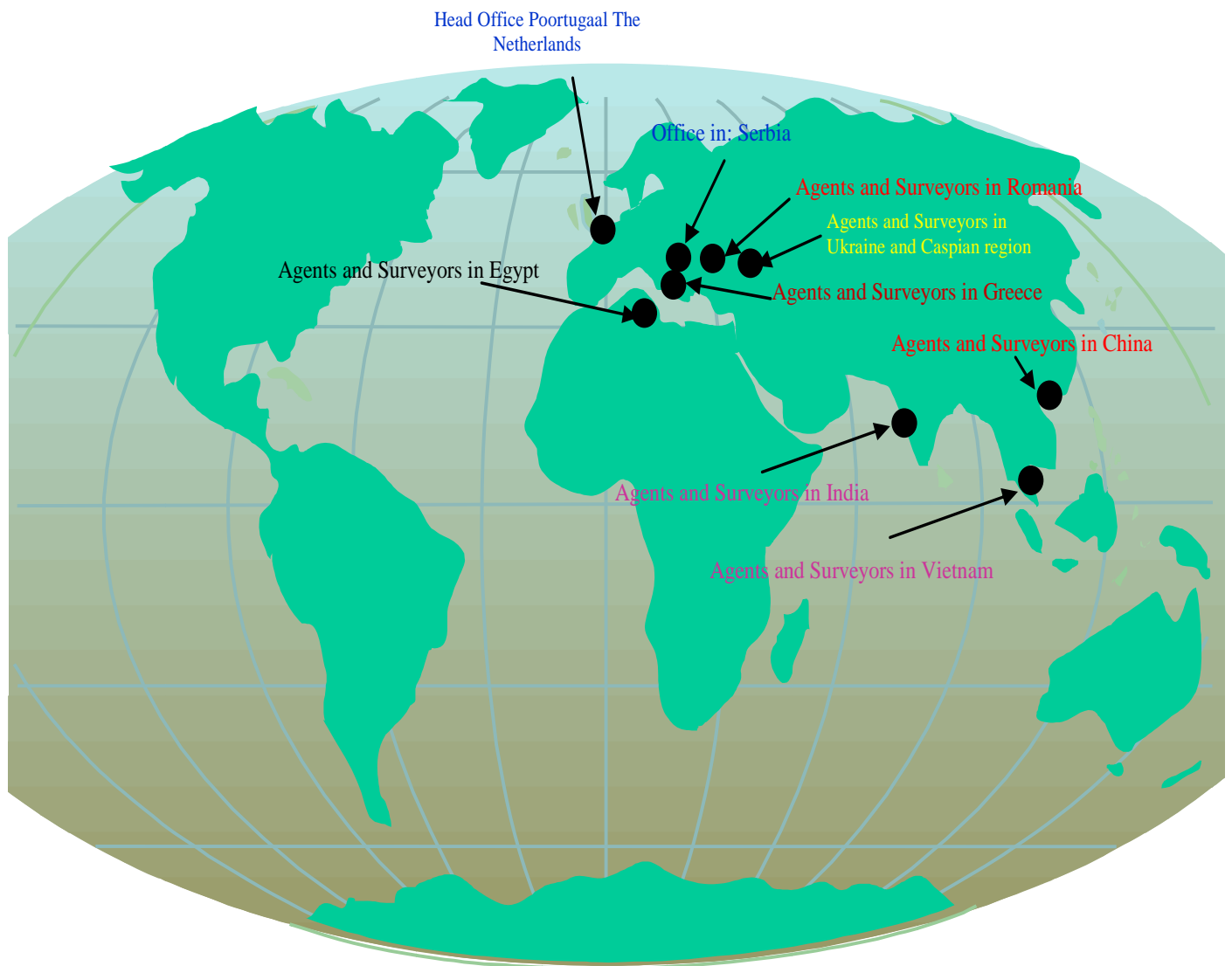
FriendShip-Sayang Group

Albrandswaardseweg 7, 3171 AD Poortugaal, The Netherlands

Tel: +31-(0)10-5012215, Fax: +31-(10)-5012501

e-mail: nesha@planet.nl; Site: www.inec.nl

WORLD WIDE
365 DAYS A YEAR
24 HOURS A DAY
SERVICES



With the spirit of **I**nvention
 Existing from **N**ecessity
 Working with **E**xperience
 Accepting a **C**hallenge

FriendShip Marlin BV



Company Profile

INEC BV together with **FRIENDSHIP MARLIN BV** are companies operating under

FRIENDSHIP SAYANG HOLDING BV.

INEC BV was founded in 1990 as a sister company of BOSDIJK, since 1947 well known Marine Surveying and Consulting Company in The Netherlands.

Since 1991 INEC is an independently operating company, operating as a Naval Architectural and Consulting Bureau under the laws of The Netherlands.



The main scope of works of INEC BV is designing of sea-going and inland ships vessels of all types; i.e. chemical tankers, LPG tankers, container vessels, dredgers, passenger vessels, off shore, special ships etc.

Besides the designing activities (for new building as well as conversion of ships) assistance is rendered to clients during all stages of building or conversion period of their vessels.

Since 1999 we have made expansion in owner's survey, brokering and building activities, especially in China, Far East and East Europe.



Since 1992 Inec surveyors have, in close cooperation with our design department, built and/or surveyed many vessels in Russia, Rumania, Poland, Yugoslavia, Ukraine, The Netherlands, England, Germany, Turkey, Far East, both Americas, Malaysia, China etc. for clients directly or under companies like FriendShip Marlin etc.

Head office in The Netherlands designed more than 75% of the surveyed vessels

Friendship Marlin was founded later with the main purpose to provide services in building, brokering and delivering of turn-key ship building projects trading and other services.

Since founding, we have realised more than 1500 different projects such as design, engineering, production, building, expertise, consulting etc.

All activities are managed from our head office in The Netherlands.



New building Surveys



Special and Transport Surveys



Damages on ships and their parts



The surveyors of Inec are specialized in:

- * Survey work
- * Liability investigations
- * Valuations
- * Consultancy
- * Inspections
- * Arbitration

With regard to

- * Inland vessels
- * Coastal vessels
- * Fishing vessels
- * Seagoing vessels
- * Yachts and yacht-harbours
- * Transport pontoons
- * Salvage materials
- * Diesel engines propulsion machinery
- * Offshore material
- * Containers and container handling equipment
- * Excavators, bulldozers etc.
- * Tugs and towing equipment
- * Bridges, locks, jetties
- * Steel constructions
- * Docks
- * Cranes, hoisting equipment and floating sheerleg
- * Heavy Lift Equipment and special transports
- * Contractors equipment and dredging equipment

The following activities are also covered by us:

- * On - and off-hire surveys
- * Loss of hire surveys
- * Management advice in shipbuilding, shipping and salvage industry
- * Supervision of salvage work
- * Advising with regard to salvage claims remunerations
- * Survey with regard to pollution
- * Coating surveys
- * Supervision during new-building, conversion and repair
- * Condition surveys, suitability surveys and pre-entry surveys
- * General average surveys
- * Builders risks surveys and guarantee surveys
- * Expert Witness for Courts



Surveys during night operations



Assessment of Damages



Coating Surveys and Special Surveys



Principals

Work is undertaken on behalf of insurers, insurance brokers, average agents, courts of justice, lawyers, ship-owning companies, ship-owners, shipyards, P & I Clubs, government institutions, Classification Societies, etc.

Qualification

Our leading management and chief designers are University Graduated Naval Architects.

Our engineers are well experienced and have respectable references in the activities all over the World.

Reporting

The reports can be issued in the Dutch, English or German language.

Training

All surveyors and experts of the companies have a technical or nautical education and years of experience in the shipping-, shipbuilding or industry.

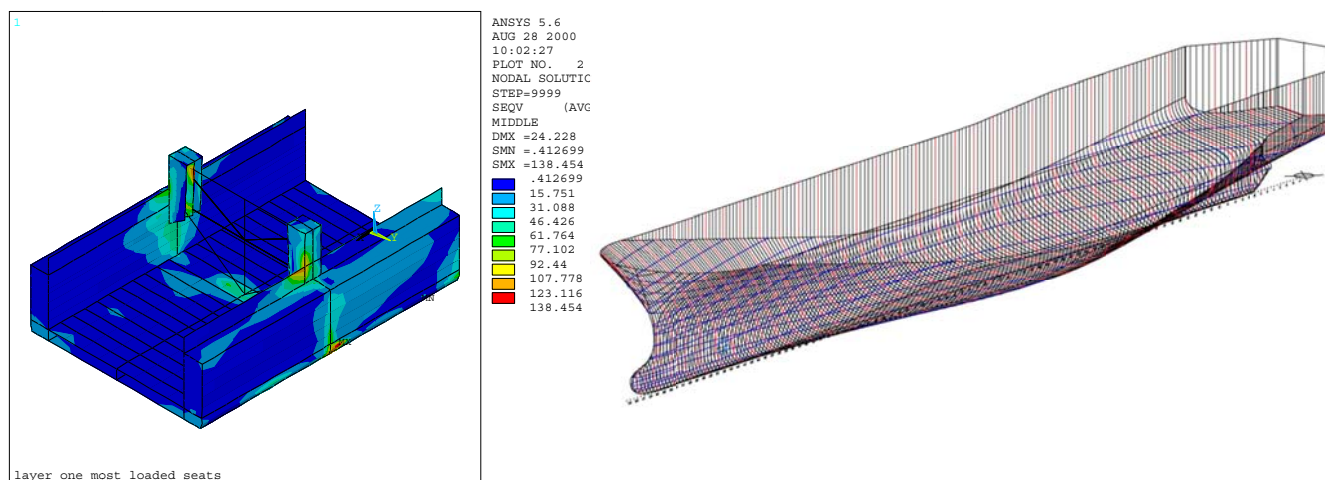
The surveyors regularly attend courses and seminars, and are all members of one or more technical or nautical institutes.

All our offices have an extensive technical and nautical library and modern computerized documentation systems.

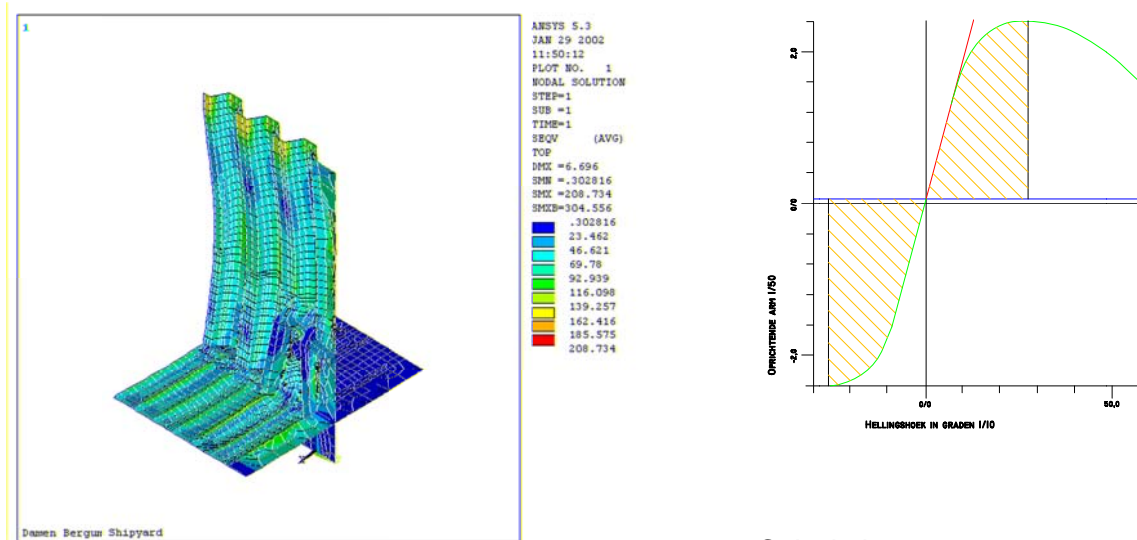


The specialties of Inec BV are **EXTREME** and **NEW DESIGN CHALLENGES**:

- Developing of body plans for all types of sea-going and inland waterway vessels.

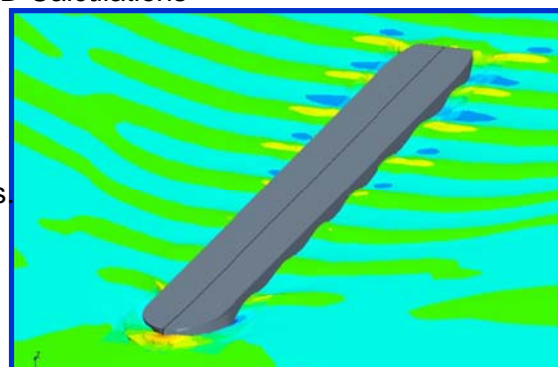


- All types of hydrostatic and hydrodynamic calculations (including damage stability calculations for chemical tankers and passenger ships), power prediction and propeller calculations, stability calculations for RO-RO and container vessels, etc...
- Longitudinal and local strength calculations.

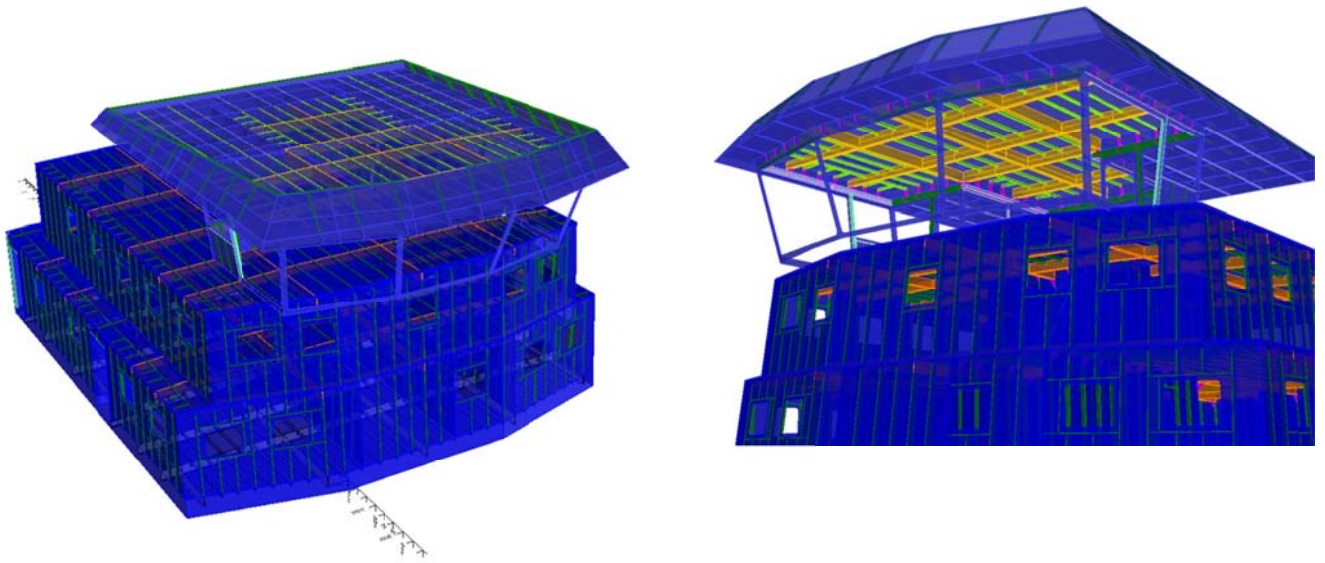


Stability Calculations

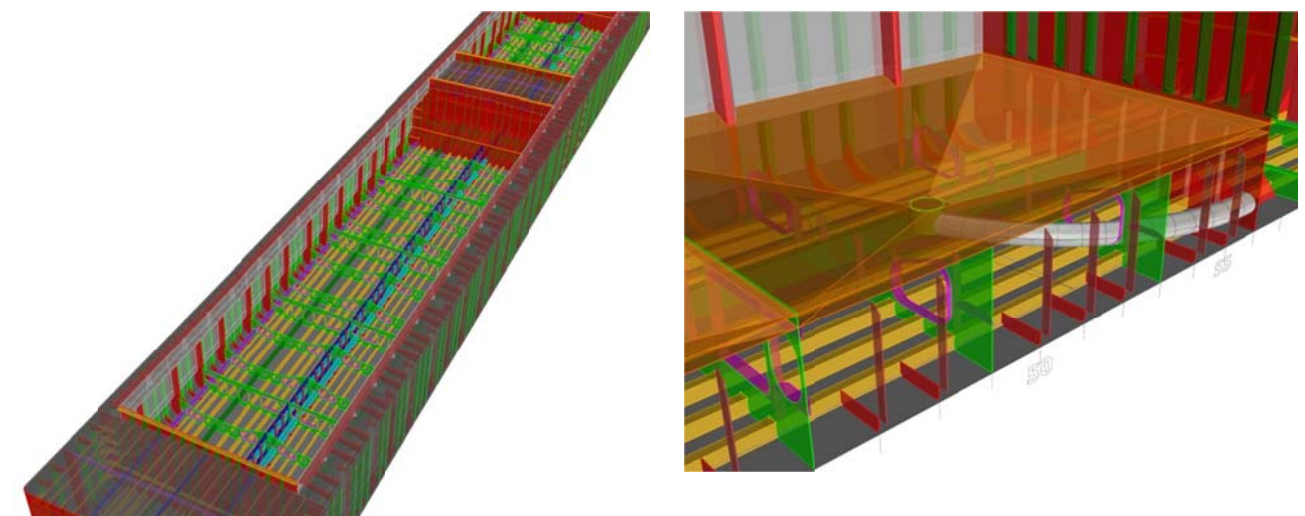
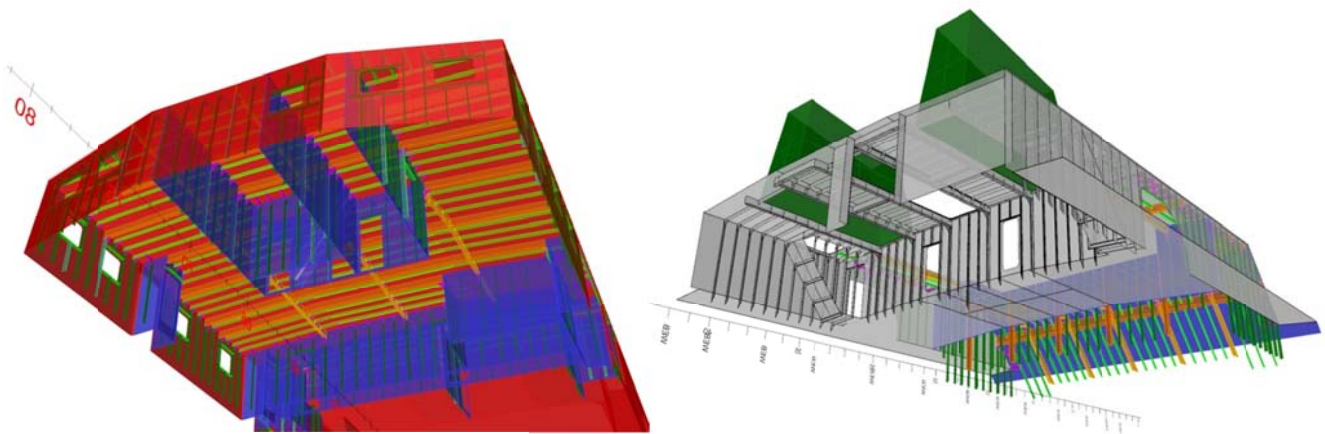
- Construction and machinery classification drawings.
- Safety Plans
- Developing of pipeline systems
- Workshop documentation
- Preparing of "Technical documentation"&makers lists.
- Full support during new building, conversion and reconstruction projects.
- Assistance during contract negotiations between owners and building yards.
- Consulting and logistic support.



All activities are performed by university graduated naval architects and marine engineers.

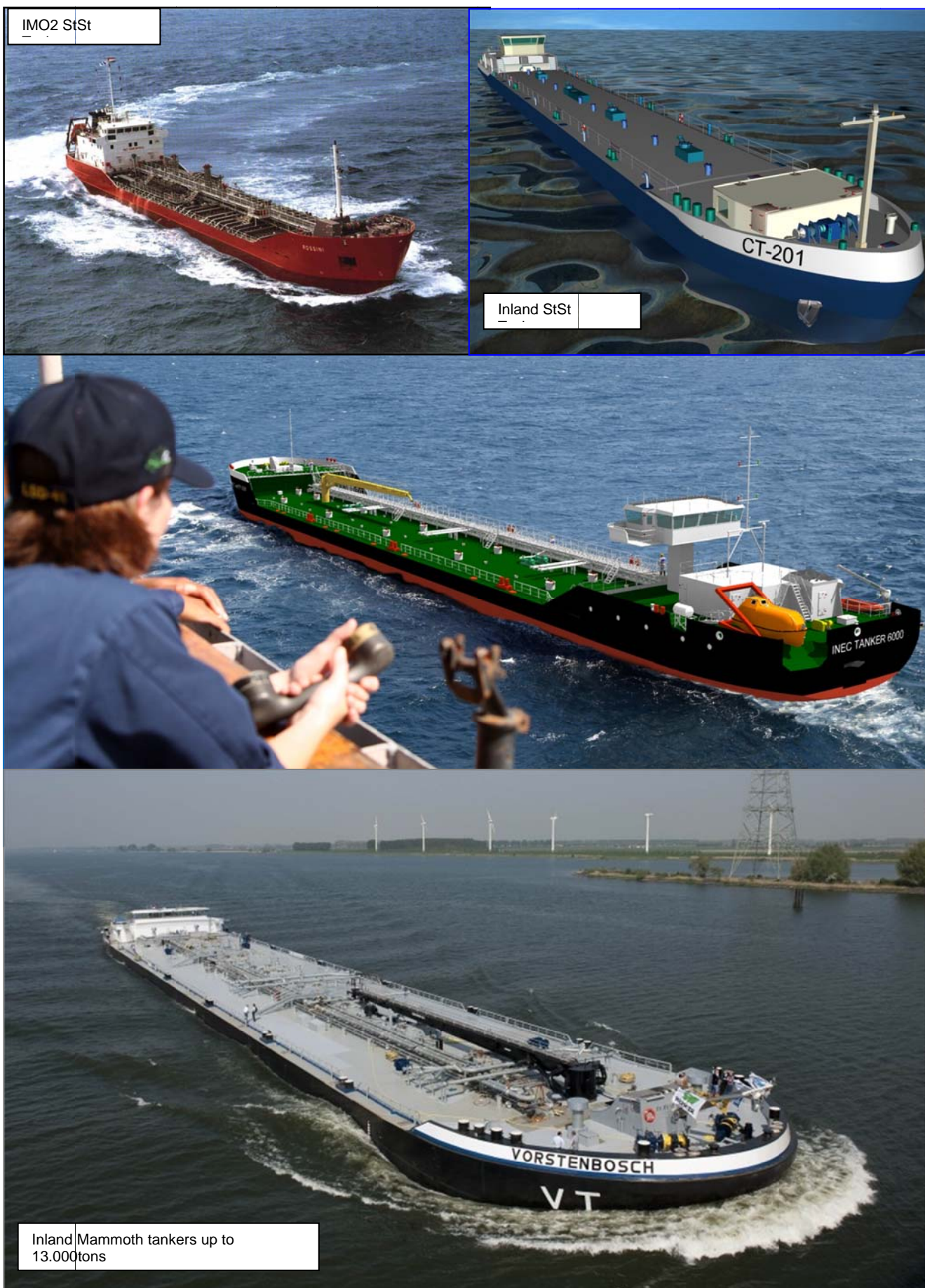


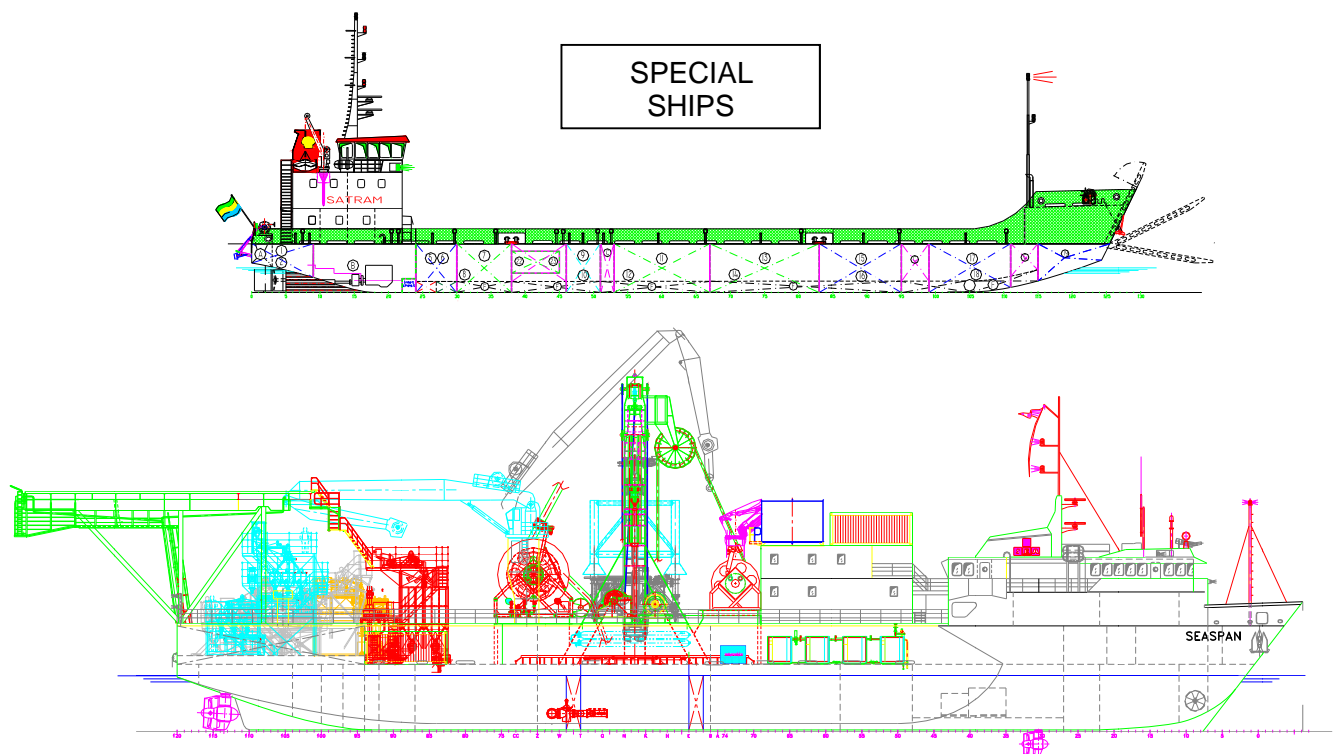
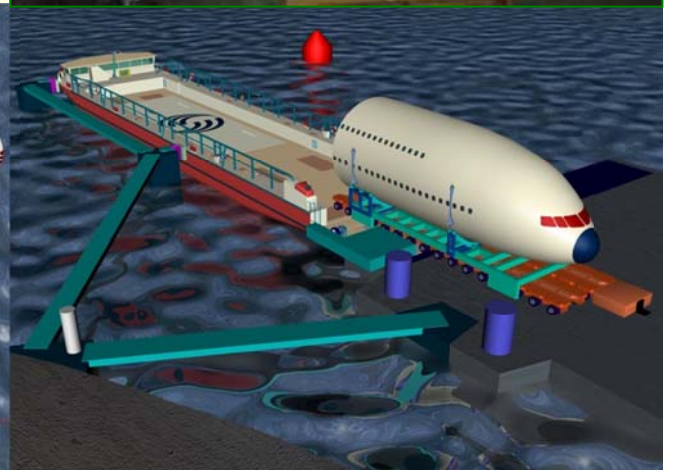
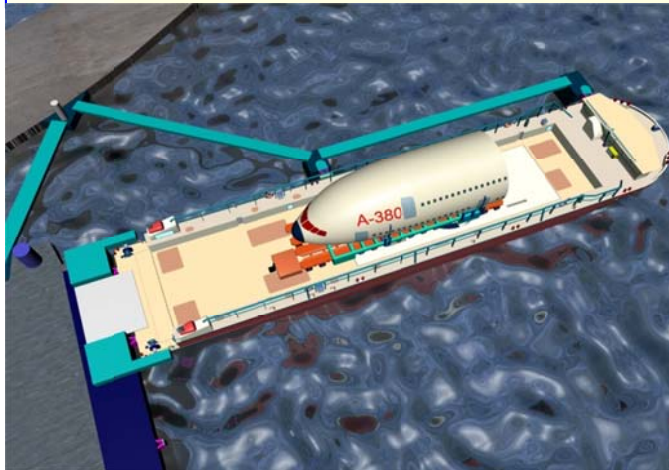
3D WORKSHOP DESIGN, FLEXIBLE AND FIXED ACCOMMODATION-PUSHER 6000HP

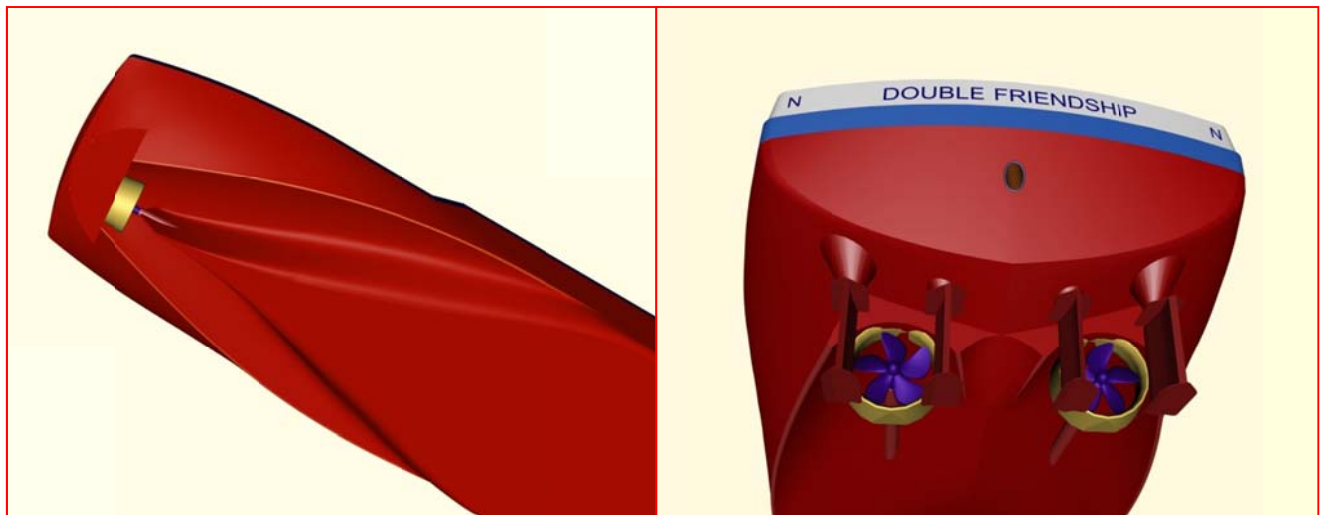
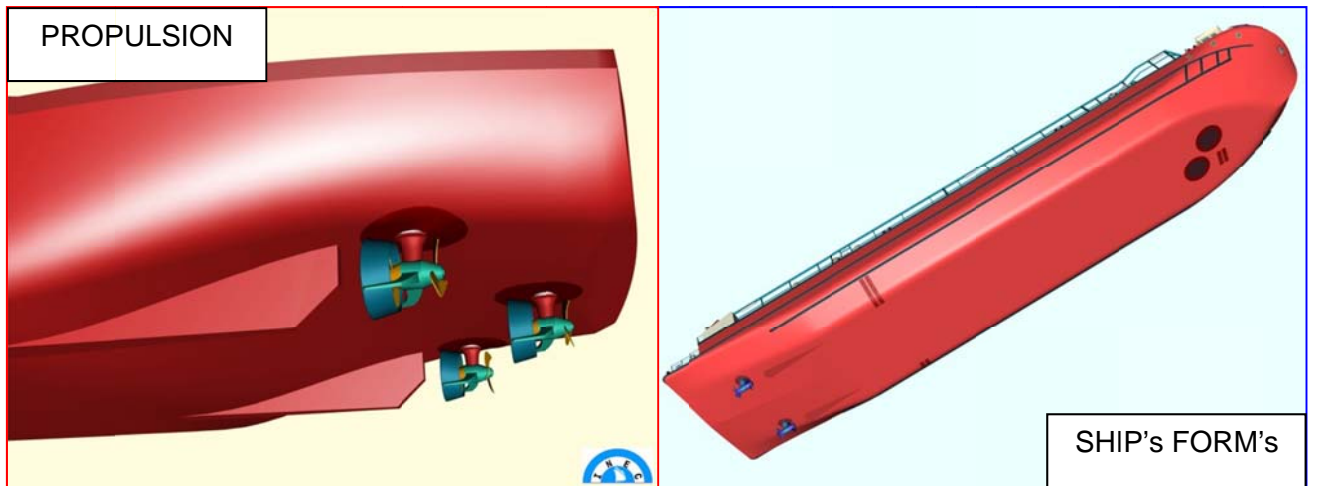


3D WORKSHOP DESIGN, SPECIAL CEMENT BARGES FOR HOLCIM-FRANCE

SOME of OUR DESIGNS:





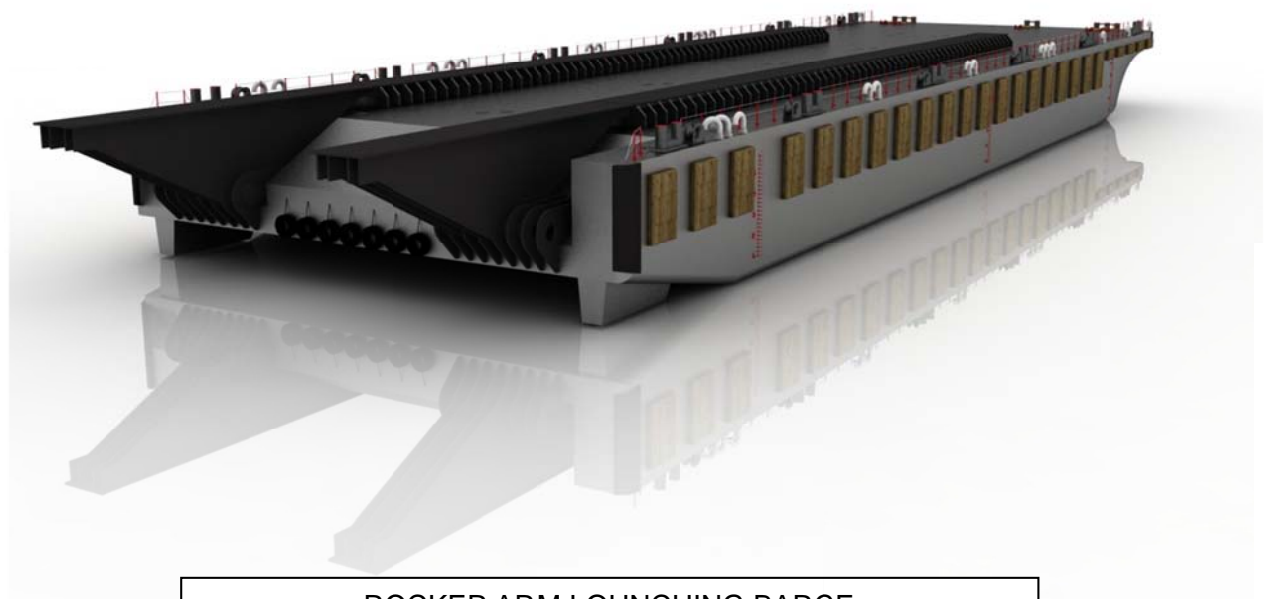
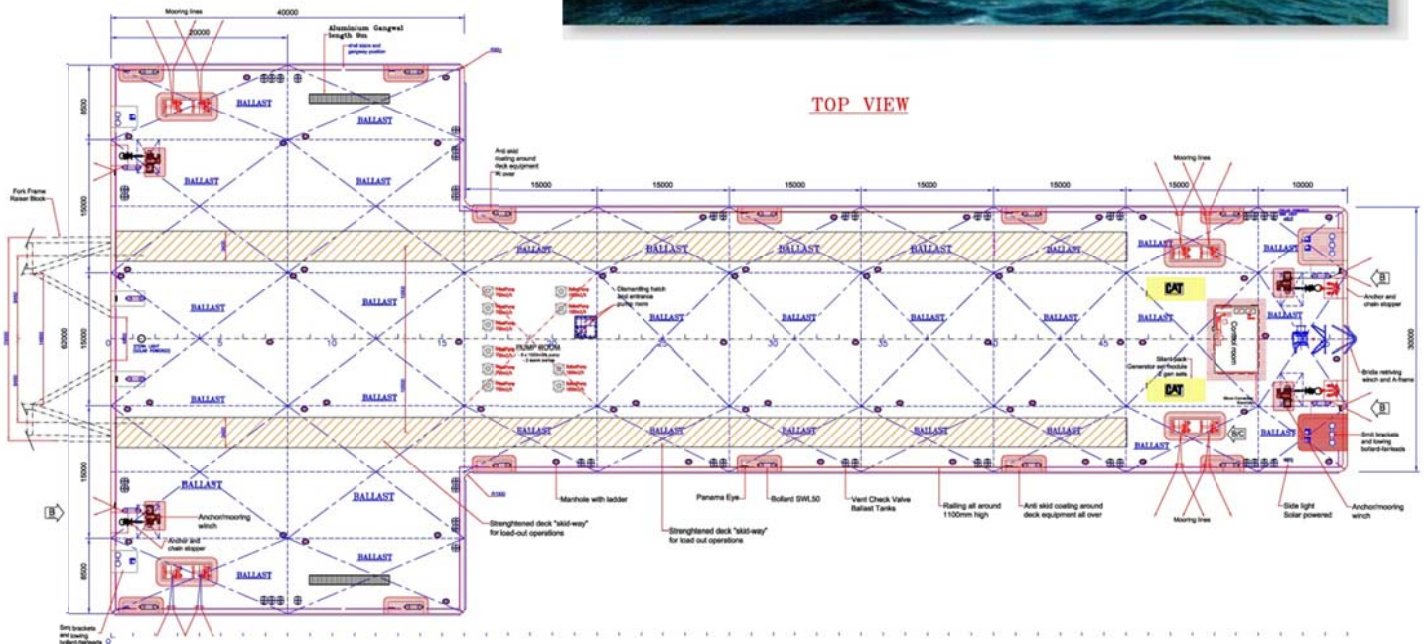


Model Tests

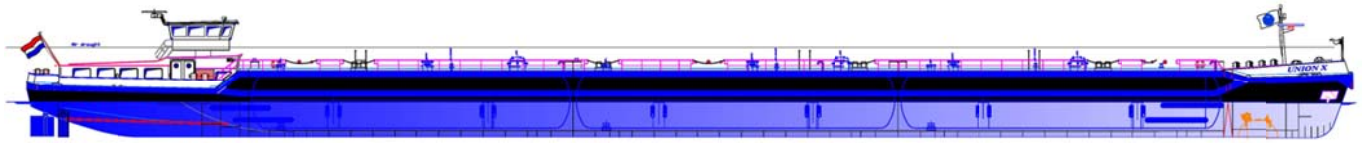
OFF-SHORE



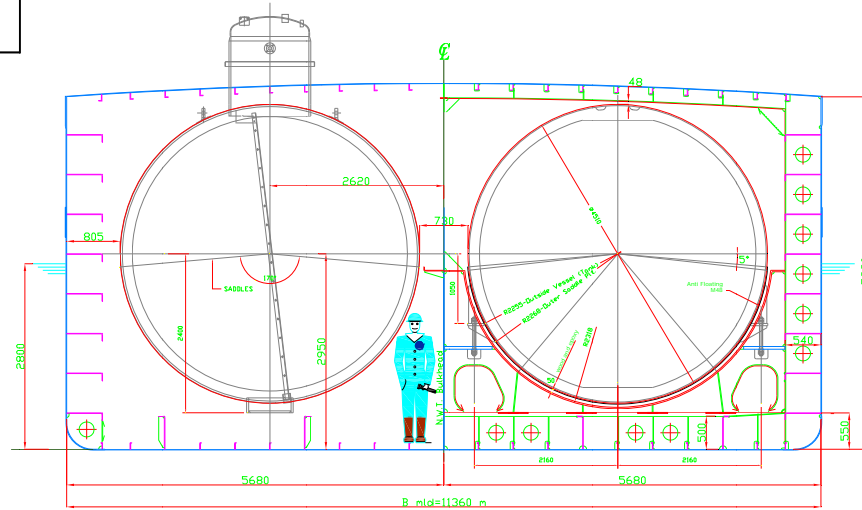
TOP VIEW



ROCKER ARM LAUNCHING BARGE



GAS TANKERS



Floating Restaurants



Dredgers



Airbus A380 transportation barge



CHEMICAL TANKERS AND DRY CARGO SHIPS OF ALL SIZES



ESTUARY & SEA GOING TANKERS



ESTUARY CONTAINER CARRIERS



MULTIFEEDER 350TEU



MULTIFEEDER 800TEU



2300DWT-5000DWT none geared
dry cargo ships



5000dwt-15000DWT MPV's



SPECIAL HEAVY TRANSPORTS





LUXURY PASSENGER RESIDENTIAL VESSEL





Special custom designed pushers for Tropical rivers and coastal area



DAMEN PUSHER® 2611

High Performance Pusher 46 x 19m with 4 engines – DAMEN Shipyards



DAMEN PUSHER® 4619

Modular pusher – Sudan 22.50x8.50m
Custom modular pushers for Africa
(first design and deliveries to Sudan 25 years ago)





**Sea Going Tug Pusher
with Azimuth Propulsion**

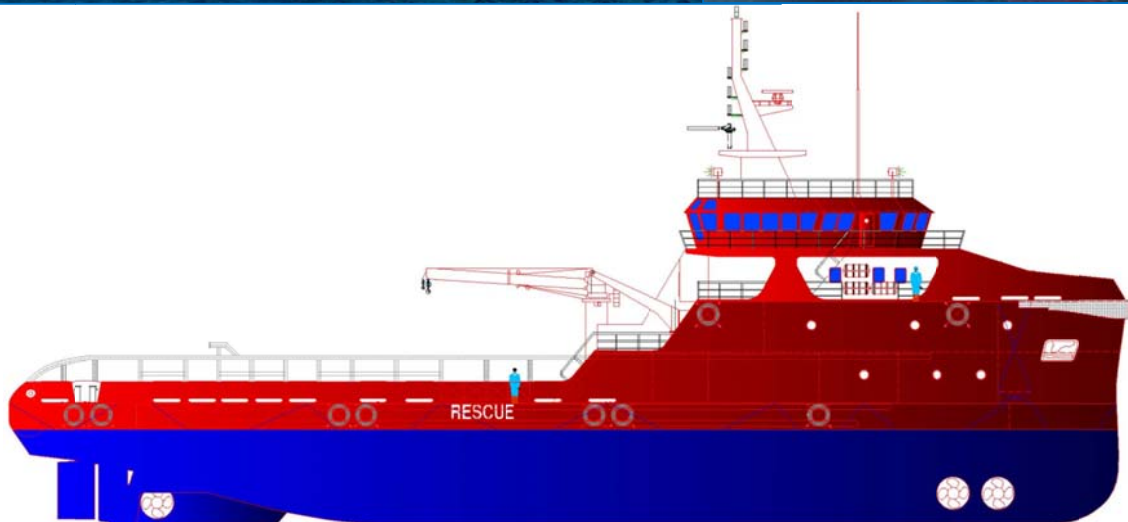




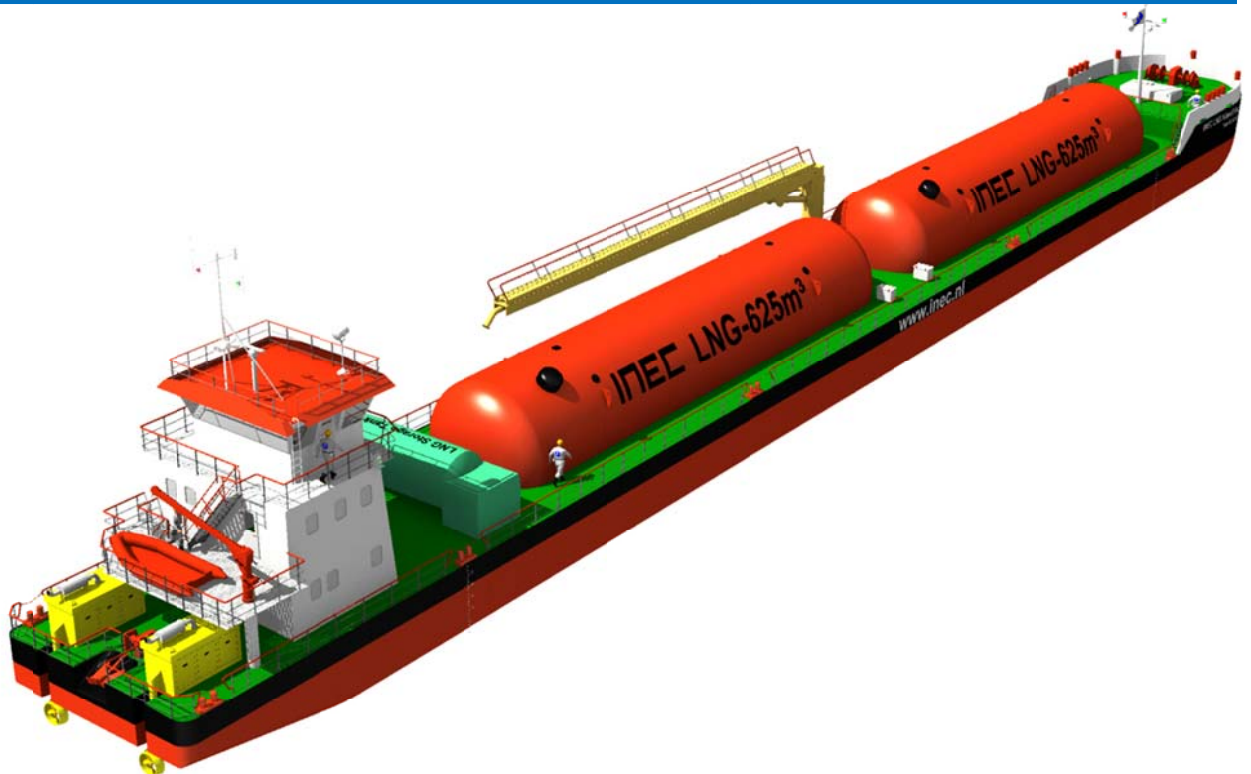


FIRST WORLD INLAND 2500m³ LNG TANKER

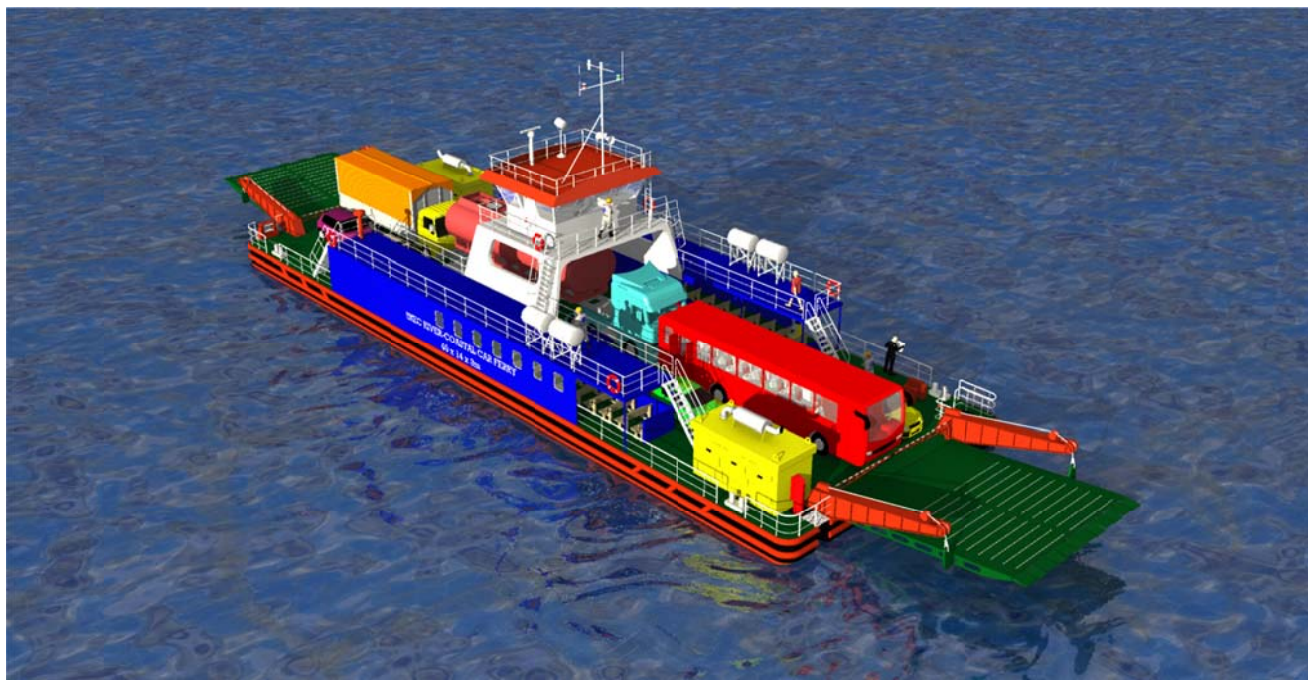




Different PSV and anchor handling ships for Off Shore



2014-Inland Shallow Draught LNG Tanker



2014 – Coastal – Inland Car/Passenger Ferry



2014/2015 – Passenger-RoRo Sea Going Ferry

SERIAL of TANKERS FROM 1200-2500ton

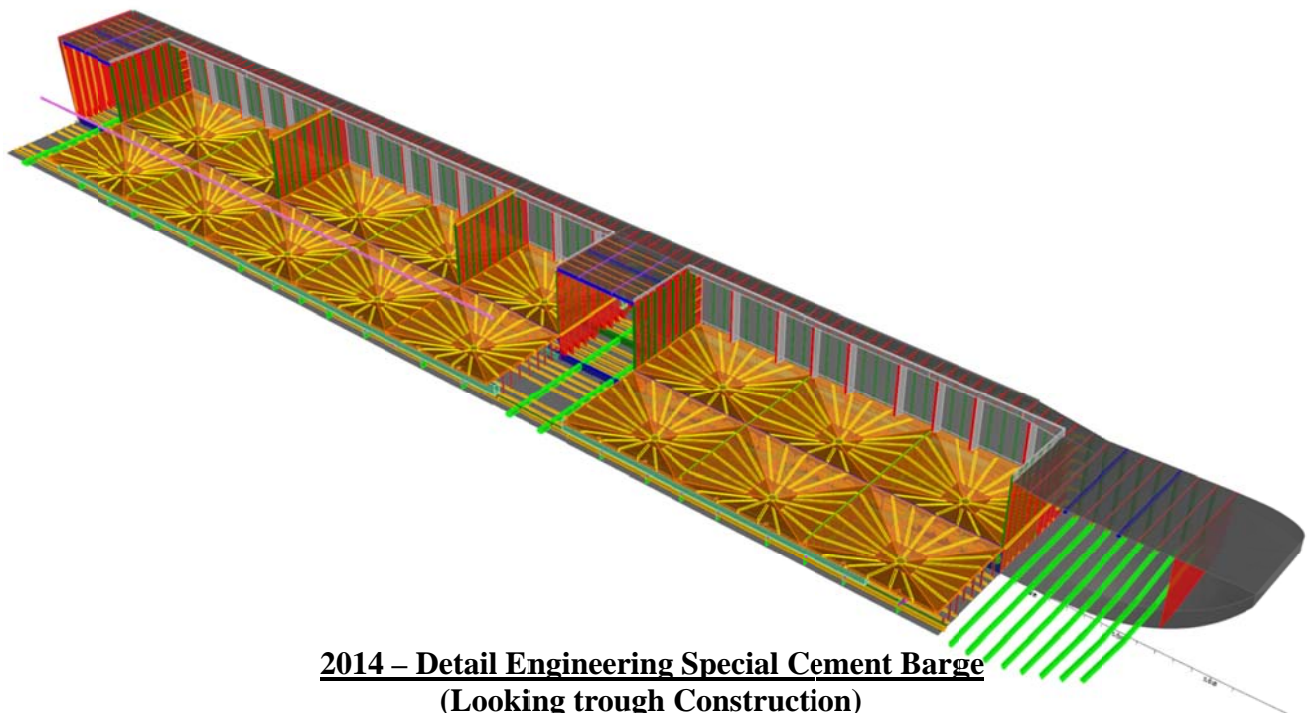


SHALLOW WATER TANKER 6000ton





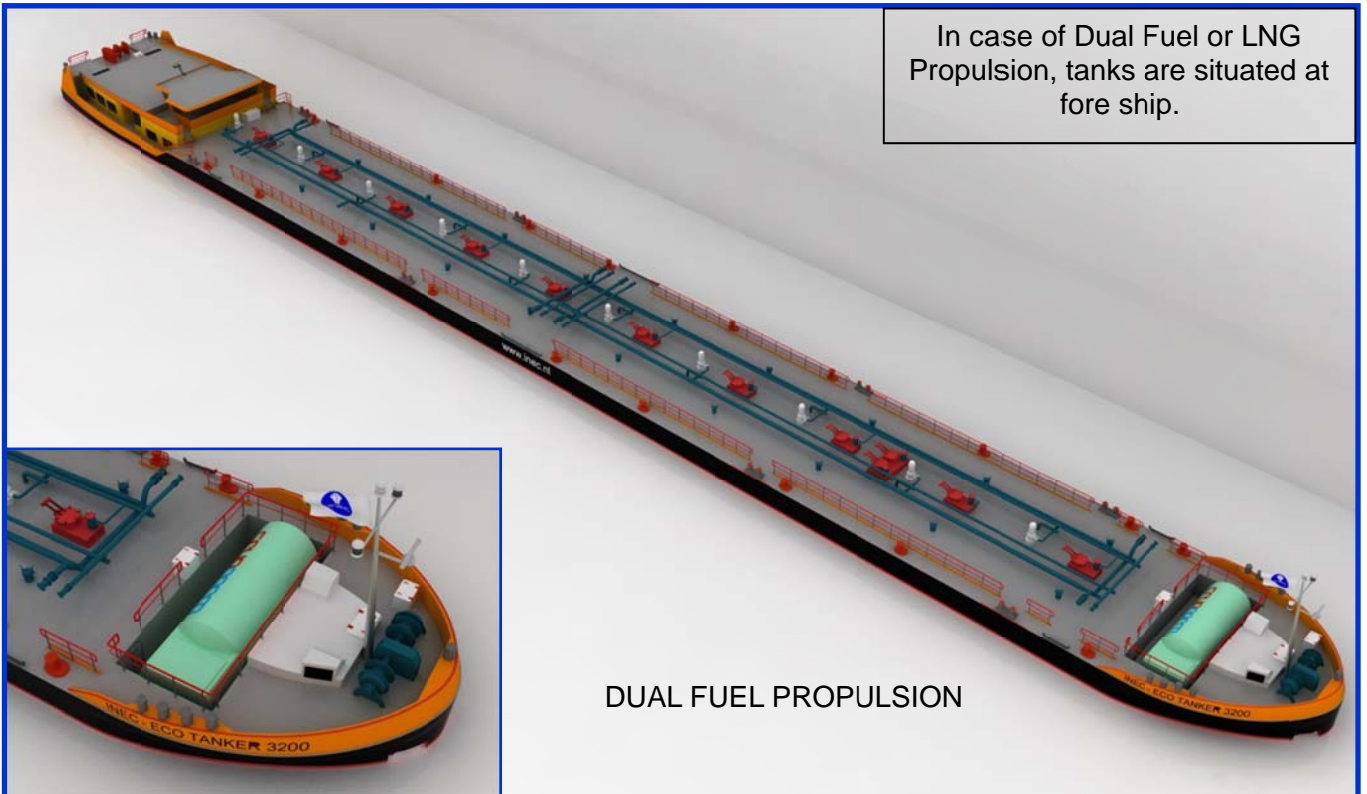
2014 – Inland Mega Pusher 7350HP



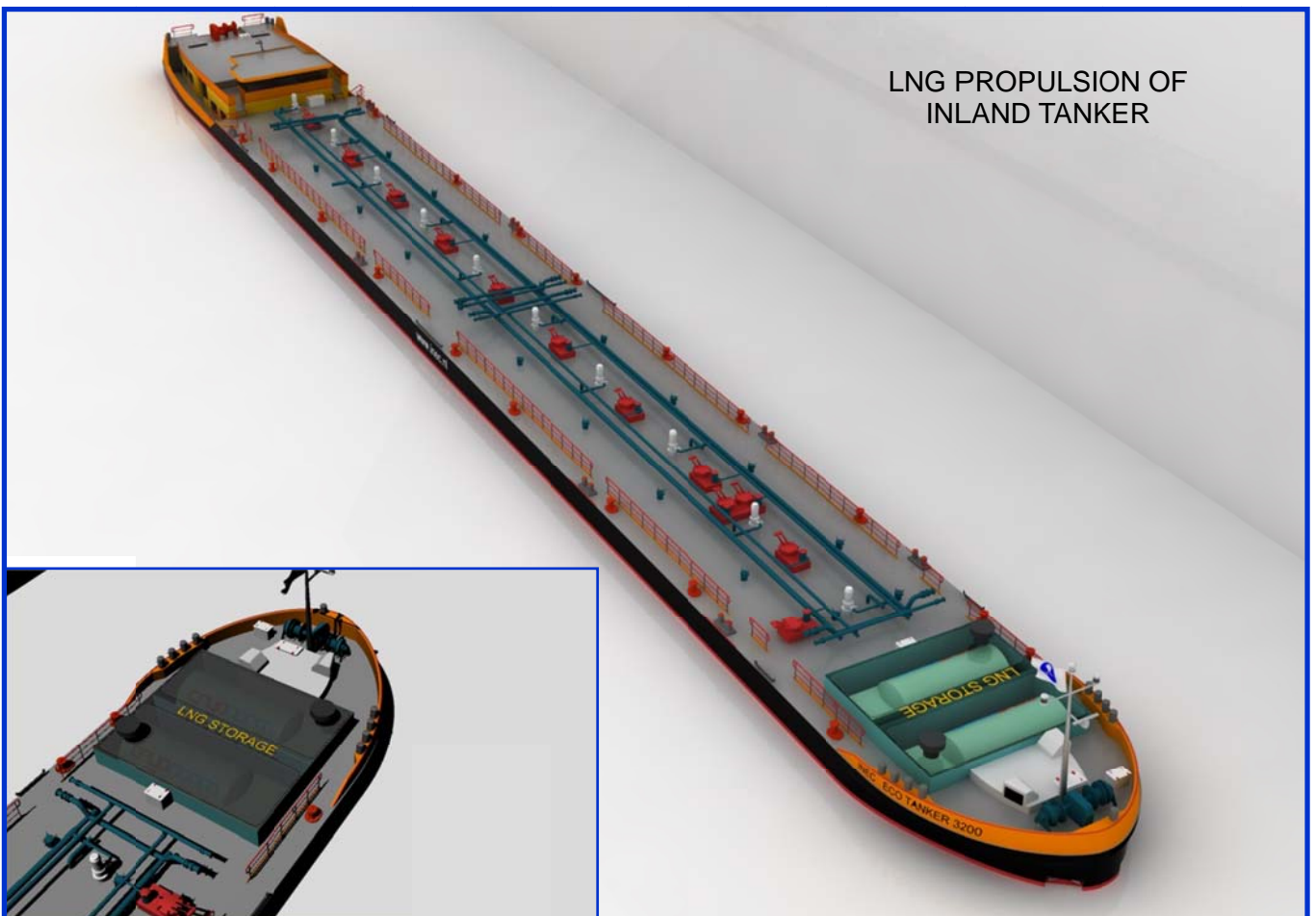
2014 – Detail Engineering Special Cement Barge
(Looking trough Construction)

NEW GENERATION of DIESEL/LNG ELECTRIC INLAND TANKERS

In case of Dual Fuel or LNG Propulsion, tanks are situated at fore ship.



LNG PROPULSION OF INLAND TANKER

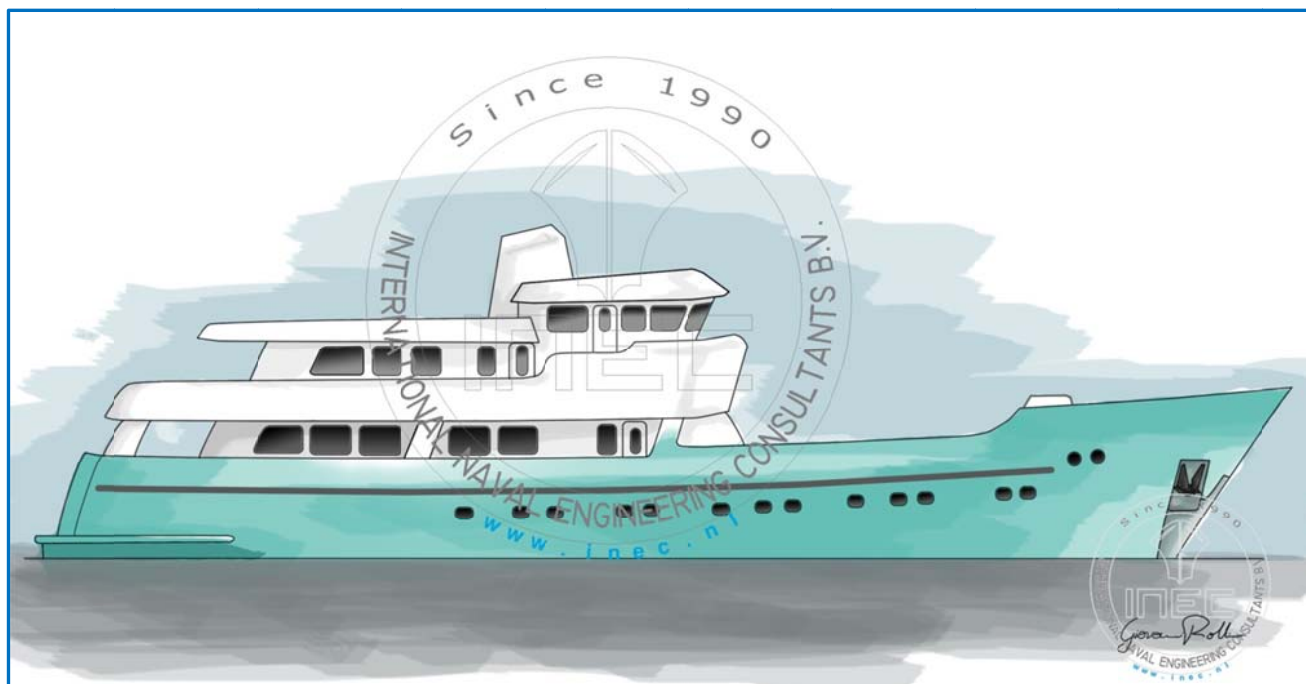


SPECIAL DEGASIFICATION PONTOON



ALL ABOVE VESSELS DESIGNED BY INEC BV

CUSTOM YACHT DESIGNS



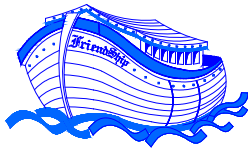
SPECIAL TANK BARGES (8500-10.000tons)



COMBINATION BUNKER TANKERS (LNG / MDO/ HFO)



LNG BUNKER TANKERS



FriendShip-Sayang Group

Albrandswaardseweg 7, 3171 AD Poortugaal, The Netherlands

Tel: +31-(0)10-5012215, Fax: +31-(10)-5012501
e-mail: nesha@planet.nl; Site: www.inec.nl